

COMIA C2



SAMPO ROSENLEW



SAMPO ROSENLEW C2

THE SAMPO ROSENLEW C2 IS SPECIALLY DESIGNED FOR EXPERIMENTAL FIELDS AND SEED BREEDING

The modern appear and ergonomic cab has been perfected by the company's engineers. The single most important factor in plot harvesting is to ensure that all the grains come from the intended plot. To guarantee this, the SR C2 has an extremely effective and reliable self-cleaning system. The combine can be equipped with special headers for different types of crops such as sunflower or maize, SAMPO ROSENLEW combines have a reputation for being easy, fast and ergonomic to clean, and the C2 continues this legacy.



NEW C2

AVARA -CAB

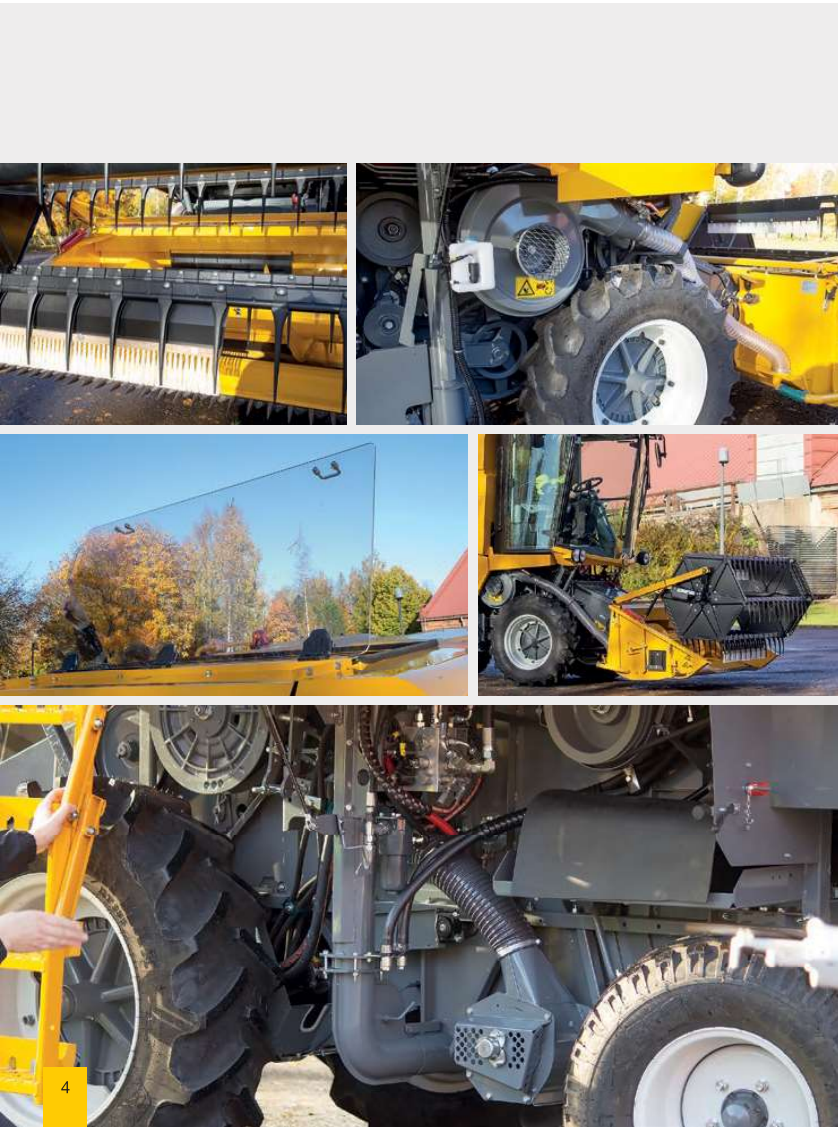
AVARA - MORE THAN JUST GOOD LOOKS

The driver's clear visibility of the cutting table has been one of the things that were taken into consideration when designing the new cab. The control console integrated in the seat acts as the nerve centre of the AVARA cab. From the COMVISION LITE, touchscreen, you monitor and adjust harvesting adjustments.

The 45-degree design of the handle differs from that used in other handles on the market. In this position, the hand can rest on top of the handle while still being able to control different functions. The multi-function lever is only one part of the well-thought-out controls used in the C2. All threshing-related activities, such as the controls of the machinery and cutter bar, are in the armrest. The console also has 12V and USB plugs.

The AVARA is well-equipped on the outside. Electrically folding cab stairs, 8 working lights and big window to the grain tank.





CUTTING HEADER

The header cuts cleanly and evenly. The electrical and hydraulic adjustments conveniently operated from the cab make threshing versatile and accurate. . An electrical reverser for the header can be used in case of some unwanted particle tries to enter. Header sizes are available, 1,5 m, 2,0 m or 2,3 m

The SR C2 uses the CHAC System (Constant High volume Air stream Cleaning) to provide high cleanliness on the header to ensure clean samples. The special made brushes on the pick-up reel combined with an effective airflow system result in supreme cleanliness throughout the whole threshing mechanism. Every detail has been taken into consideration in the design to provide uniform and reliable grain samples.

The header is equipped with a continuous airflow blower to ensure clean and uniform crop samples. The crop is evenly fed by the feeder elevator into the threshing drum. Two feeder chains support and stabilize the slats. The feeder elevator is thoroughly cleaned after every plot by the CHAC System. The blower is the core of the airflow cleaning system. The airflow is produced by a belt driven blower and positioned precisely at the cleaning points by means of a distribution system.

THRESHING MECHANISM

The Heavy-Duty closed threshing drum and large wrapping angle has been proven it's value in more than 4000 plot combines. The electrically adjustable threshing drum speed is designed to outperform itself even in the hardest threshing conditions. This cylinder manage in the thoughts crops and conditions. The concave clearance can be adjusted with an electrical motor also. The cylinder speed and concave clearance, you adjust from the COMVISION LITE touch screen in the cab.

The special made good grain elevator has a sealed construction throughout the whole elevator area. This prevents grain overflow and ensures clean, uniform samples. The elevator chain has round plastic, paddles which fits perfectly to the "pipeline". An airstream helps the material flow also, to keep clean in the most difficult conditions also.

SAMPO CHAC – SYSTEM

Constant High volume Air stream Cleaning



Threshing system in the picture equipped with option:
Double sieve system with returns

The C2 is equipped with three straw walkers and a single sieve system. The walker area is easy to access from a hatch from the rear. For additional efficiency an optional double sieve system can be fitted on the combine. With the added sieve area, you can choose between 5 different sieves, 5,8,10,12 or 16 mm. The upper sieve is adjustable. This system includes also an efficient return system. The returns are blown back to the grain pan area.

The straw chopper is an option. In case this option is chosen, you can still very easy to take it out of use. The chopper also functions as a good counterweight in balancing the combine. Counterweights can be added also from the option list which are mounted to the rear.

GRAIN TANK

The C2 has a big grain tank with a volume of 1875 liters. The special good grain elevator drops the material in the middle of the tank and distributes it evenly. From the cab you have a big window to the tank and a plexi glass grain tank lid brings day-light to it. The unloading pipe is operated from the cab's joystick, pushing it up or down and starting the unloading. The unloading height is 3,18 m. The big diameter auger has high speed of the unloading.





ENGINE AREA

The strong 130 hp YANMAR 4-cylinder engine puts the SAMPO ROSENLEW plot combine to the next level. The engine's emission level is TIER5 and has also EPA approval. Cooling screen of the engine has big rotary net which ensures that big dust particles won't get stuck on the net. The net has even a vacuum cleaner type of nozzle which sucks the particles away. The transmission hydraulics has been upgraded and has a big hydraulic drive pump. A big service door at the rear of the combine gives good access to the engine area. Fuel tank is 200 liters and the DEF tank is also easy to access. The engine can be equipped with an air compressor and air tank. As before the combine can be equipped with 4 WD on the rear axle,

WEIGHING SYSTEMS

HARVESTMASTER

The C2 can be equipped with the HARVESTMASTER GRAINCAGE models. Discuss with your local SAMPO dealer which weighing system application will fit your needs the best.

| Technical specifications | | C2 | |
|-------------------------------|----------------|------------------------|--|
| CUTTING HEADER | | | |
| Widths available | m | 1,5 2,0 and 2,3 | |
| Cutting height | m | - 0,20...+1,20 | |
| Knife speed | strokes/min | 1020 | |
| Header reverse | type | electrical | |
| REEL | | | |
| Diameter | m | 1,05 | |
| Speed range | rpm | 15...49 | |
| Speed adjustment | | elec. | |
| For/aft adjustment | | elec. | |
| FEEDER HOUSE | | | |
| Grain conveyor | | chain | |
| THRESHING CYLINDER | | | |
| Diameter | m | 0,50 | |
| Width | | 0,78 | |
| Speed range | rpm | 400...1150 | |
| Speed adjustment | | elec. | |
| Number of rasp bars | pcs | 7 | |
| Sealed drum | | standard | |
| CONCAVE | | | |
| Number of rasp bars | pcs | 12 | |
| Length | m | 0,49 | |
| Angle of wrap | ° | 108 | |
| Adjustment | | electrical | |
| STRAW WALKERS | | | |
| Number of walkers | pcs | 3 | |
| Total separation area | m ² | 1,4 | |
| SIEVE AREA | | | |
| Top sieve | m ² | 0,7 | |
| 2 sieve system with returns | | option | |
| Area for lower sieve (option) | m ² | 0,47 (option) | |
| Good grain elevator | | tubular grain conveyor | |
| GRAIN TANK | | | |
| Capacity | m ³ | 1,87 | |
| Discharge height | m | 3,18 | |

| Technical specifications | | C2 | |
|----------------------------------|-------|-------------|--|
| TRANSMISSION | | | |
| Engine YANMAR | kW/hp | 97/130 | |
| Fuel tank capacity | l | 200 | |
| Drive | | hydrostatic | |
| Tires | front | 12.4R24 | |
| | rear | 11.5 15 | |
| WEIGHT | | | |
| With standard header and chopper | kg | 4 500 | |
| DIMENSIONS | | | |
| Length with std header | m | 6,4 | |
| Width | m | 2,5 | |
| Height | m | 3,3 | |
| Turning radius | m | 3,5 | |

The manufacturer reserves the right to make changes to the machines without notice and without obligation to make such changes to machines manufactured before.
Specifications may vary from country to country. Contact your retailer for current specifications.



SAMPO ROSENLEW



Sampo Rosenlew Ltd

Konepajannanta 2A
P.O. Box 50
FI-28101 Pori, Finland
Tel. +358 207 550 555
Fax +358 2 632 6546
www.sampo-rosenlew.fi

The product development of the Sampo Rosenlew combines continues. Therefore the Company reserves the right to modify the products without prior notice and without obligation to make the same modifications to combines previously manufactured. The pictures in this brochure are selected from globally used material, as a result some details may vary from country to country. Check the information with your dealer.